

## Before Say

Our company sprinkler using high quality two chassis modified at home and abroad, it is suitable for various road spraying, spray, cooling, dust removal, washing dust stolen goods, can also be used for road sprinkling, spray, cooling, dust removal, dust washing dust stolen goods, can also be used for road maintenance, landscaping and emergency fire control, transportation drinking water, etc. The sprinkler is mainly composed of the car chassis, tank body, water pump, ball valve, water pipeline, sprinkler device and other parts. Water pump, suction box and ball valve are all national finalized products, good performance, reliable work, high pressure, high flow, low fuel consumption, open the music horn switch when sprinkling, beautiful music with you to work happily.

**See Record**

II. Operating

procedures

IV. Maintenance of

sprinkler V

VI. Details of the accompanying accessories

# I. Introduction of the working principle and structure

Brief diagram of 1, sprinkler structure

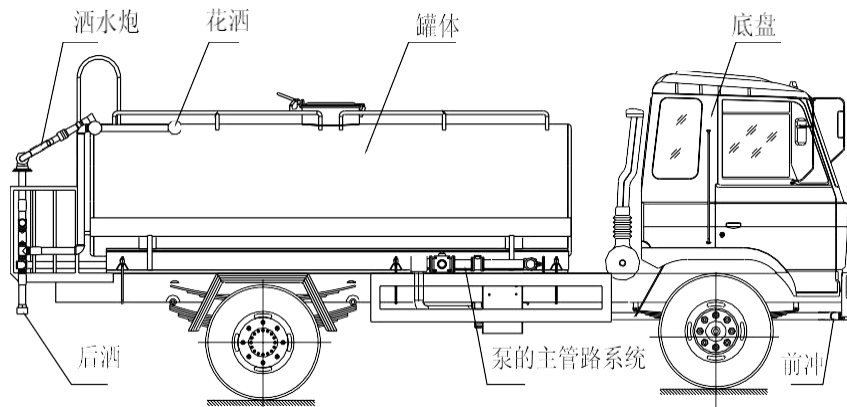


Figure 2-1 Brief diagram of sprinkler structure

## 2, Car Chassis

This sprinkler uses Dongfeng Company and FAW Automobile Group finalized the second class chassis modified. The structure of the Class II chassis used for each product is shown in the attached Automobile Chassis Operating Manual.

## 3, cans

The structure of the sprinkler tank is oval or square, made of steel plate, the whole tank water tank is room 2-3, the lower hole of the middle partition has anti-wave effect. To reduce the impact of the liquid in the tank when the car is driving. Wear rust-proof paint and decorative paint for the exterior.

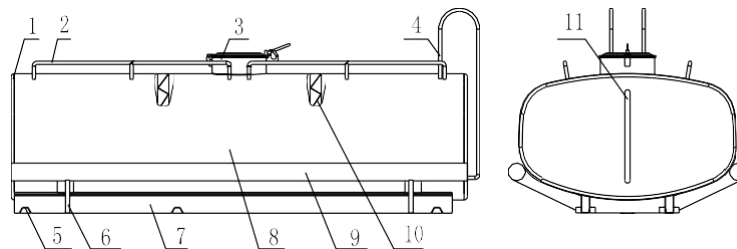


Fig. 2-2 Water tank body

(1) Head (2) upper guardrail (3) tank mouth (4) climbing ladder (5) hanging ear (6) support (7) auxiliary beam (8) barrel (9) barrel (10) anti-wave diaphragm (11) measuring tube

In order to prevent rust, the tank is anti-rust and decorative paint. The volume of the tank can be directly indicated.

## 4, Canister Components

- (1) handle
- (2) small cover
- (3) Large Cover
- (4) turn pin

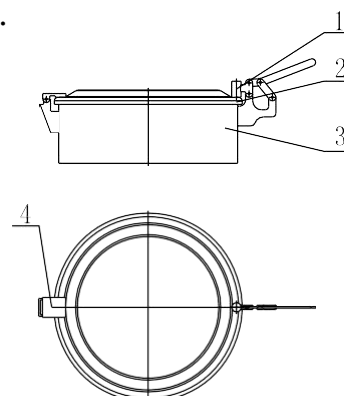


Fig. 2-3 The tank port

Tank outlet assembly: The large cap is fastened to the tank neck plate and connected by a support pin and a small guard cap. clockwise rotate the upper handle of the small cap. Reverse, after removing the ear plate, the small cap can be opened, with a  $\Phi 30$  hole in the large cap, so that the pressure in the tank is basic during the water adding process.

5, hitter

Special force collector, pneumatic or manual operation matching each model, operate the switch to pull back, the force collector enters the engagement position, drive the pump operation through the transmission shaft, the switch returns forward, and the pump stops working.

6, pump

Self-suction impeller pump is a special sprinkler pump. Refer to the operating manual of sprinkler pump for schematic structure and maintenance of the pump.

7, ball valve

The valve used in this vehicle is a ball valve and a structure. The ball valve is composed of valve body adjustment seat, sealing ring, ball, lever handle, etc. Moving the handle 90 ° to realize the switch of the ball valve. The ball valve can be combined with tightness and rotary adjustment to meet the requirements. The sprinkler is equipped with 7  $\Phi 50$  stainless steel ball valves for sprinkler regulation. One  $\Phi 50$  aluminum alloy ball valve in FIG. 4 to control pumping or sprinkling, opened when pumping and closed when sprinkling. One  $\Phi 65$ mm fire ball valve can be connected to the fire belt for emergency fire extinguishing.

- (1) handle
- (2) Type 0 type sealing ring
- (3) valve rod
- (4) ball valve
- (5) Type 0 sealing ring
- (6) seal
- (7) adjustment seat
- (8) valve body

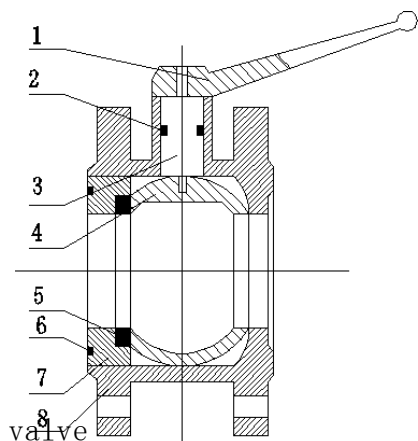


Figure 2-5 Ball valve

8, sprinkler

The front of the car is equipped with a duck mouth nozzle or round head nozzle, the back is equipped with a cylindrical sprinkling water weight, side spray flowers sprinkled with lotus head. The rear of the car was equipped with overhead shotguns. (Sample)

The sprinkler is generally used to wash the streets and play the role of dust removal and cooling. The sprinkler can change the spraying direction and Angle

of the sprinkler with the method of adjusting the nozzle thread. High-aircraft spray guns can be used for urban and rural and emergency fire trucks. The lotus nozzle can spray the dust from the middle sprinkler of the road to clean the air.

9, pipeline layout:

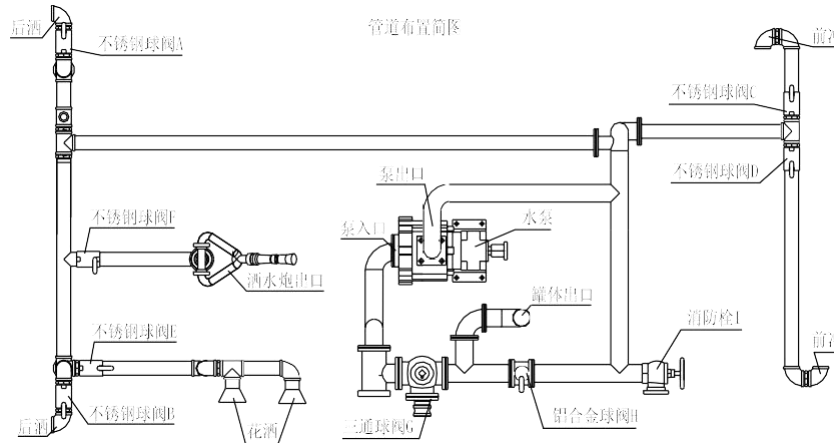


Figure 2-6 Plumbing layout brief

List of 10, accessories **Table 2-1:**

Serial number	Name	Specifications	Number	Note
1	Retractor		1	According to the gearbox of the chassis
2	Water pump	80YHCB—60/ 60YHCB—30	1	
3	Aluminum alloy ball valve	Φ50	1	
4	Three-way ball valve	Φ65	1	
5	Three pass filter	Φ65	1	
6	Stainless steel ball valve	Φ25/Φ50	7	
7	Fallan Exports	Φ65	2	
8	Sets water guns		1	
9	Fire hydrant		1	

The above configuration is general configuration, customers have special requirements for the product.

## II. Operating procedures

1,

(1) Check the lubricating oil surface in the gearbox, subject to the lower edge of

the screw plug hole on the oil surface, and add gear oil if it is insufficient.

(2) Check the transmission joystick in neutral position, check the pull tank joystick position for horizontal to right position and check the throttle controller for minimum.

Operation of the 2, water pump and force collector

① Start Connect the relevant pipe, start the engine, when the original car pressure gauge reading reaches 0.3Mpa, tap the clutch pedal, open the pickup box handle switch, slowly loosen the clutch (too fast will damage the power collector and transmission), to block.

The operating speed of the water pump is controlled by using the throttle controller.

② Stop Push the throttle controller, adjust to minimum, tap the clutch pedal and pull the pickup control switch back to the original position to shift the pickup box.

Check after 3,

(1) Check whether the booster control switch is retracted and check that the throttle controller is in the minimum position.

(2) Check the valve handle position, all closed.



#### 4, Instructions for each operation operation

##### (1) Add water to the tank

Drive the car to the reservation location, make the tank mouth at the tap pipe, open the tank lid, tap water can add water.

When the water is self-collected water to the tank through the water pump, the operation procedure is: connect the hose at the ball valve G, adjust the ball valve G to the Figure position (note: the stainless steel ball valve A, B, C, D, E, F and the fire hydrant I, open the aluminum ball valve H, open the clutch, slowly release the clutch (never too fast, otherwise the power collector or gearbox), the water will start, so that the pump to work, add water to the tank, and switch back after stopping working.

Working water indication: water passes through the three-pass ball valve G, filter net, pump, aluminum alloy ball valve H, water tank. (Where the A, B, C, D, E, F, H is closed).

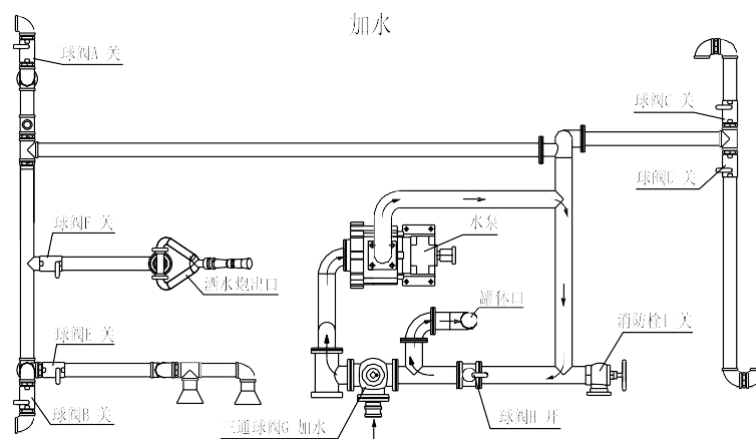


Figure 3-1-1 Water pump adds water

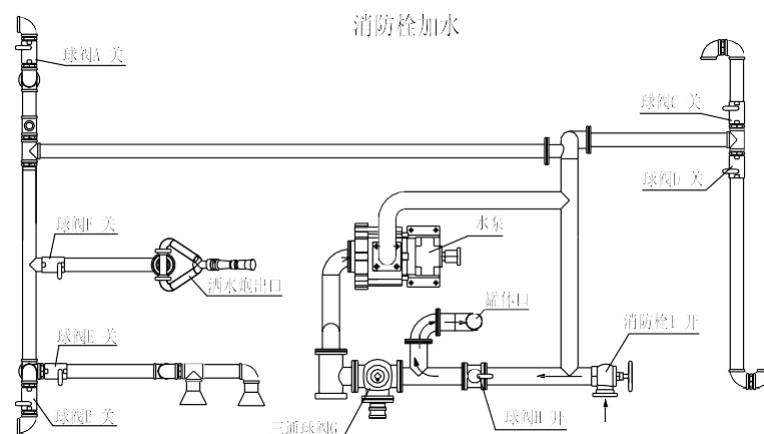


Figure 3-1-2 Add water to the fire hydrant

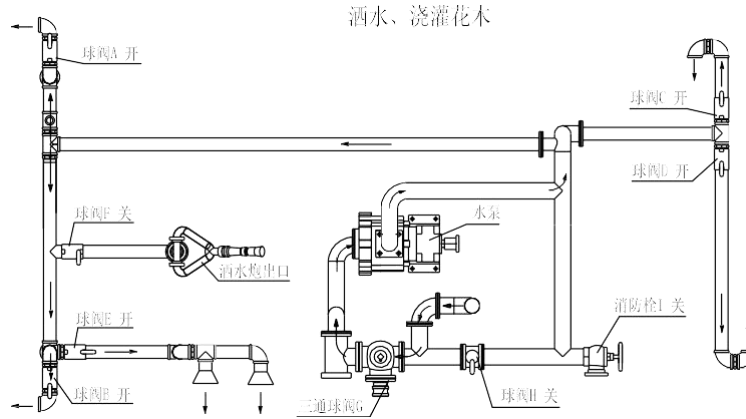
Working water signal: water through the fire hydrant switch I, aluminum alloy ball valve H, water tank. (Where the A, B, C, D, E, F, G, H is closed).

(2) Sprinkle water and water flowers and trees

When sprinkling and watering flowers and trees, its operation procedure is: adjust the three ball valve G to the figure position (note: three ball valve pit closed in the direction), close the aluminum alloy ball valve H and fire hydrant I, open the stainless steel ball valve A, B, C, D, E, open the aluminum alloy ball valve H, step down the clutch, open the power switch, slowly release the clutch (not too fast, otherwise it will be

Damage the power collector or gearbox), enable the pump to work, you can realize the function of sprinkling and watering flowers and trees, and switch back after stopping the operation.

Working water indication: water through the tank outlet, three-pass ball valve G, filter net, pump, front and back sprinkling and flowers. (Where the H, I is



closed).

Figure 3-2 Sprinkler and watering of flowers and trees

(3) Emergency fire control

In emergency fire control, the operation procedure is: adjust the three-pass ball valve G to the figure position (note: three-pass ball valve pit closed direction), close stainless steel ball valve A, B, C, D, E and aluminum alloy ball valve H, open fire hydrant I and stainless steel ball valve F, step off the clutch, open the collector switch, slowly release the clutch (do not too fast, otherwise it will damage the force collector or transmission), make the pump to work, can exit emergency fire control through the sprinkler and fire hydrant, and switch back after stopping operation.

Working water indication: water through the water tank outlet, three-pass ball valve G, filter net, pump, fire hydrant and sprinkler. (Where the A, B, C, D, E, H is closed).

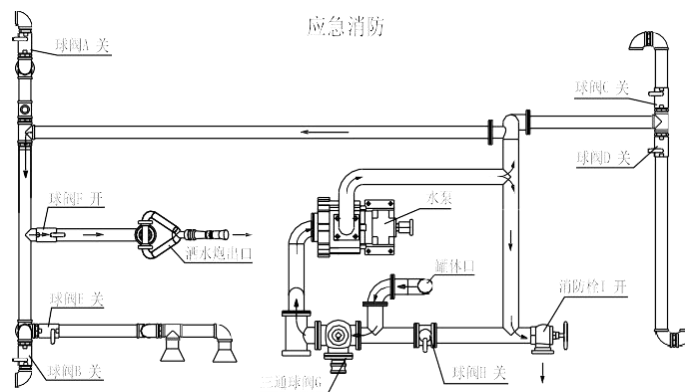


Fig. 3-3 Emergency Fire Protection

(4) Active pumping station

When doing the active pump station, the operation procedure is: connect a glue pipe at the three pass ball valve G, adjust the three pass ball valve G to

the Figure position (note: the three pass ball valve pit is closed in the direction), close the stainless steel ball valve A, B, C, D, E, F and aluminum alloy ball valve H, open the fire hydrant I, outlet pipe. Step off the clutch, open the force collector switch, slowly release the clutch (do not be too fast, otherwise it will damage the force collector or gearbox), so that the water pump starts to work, can realize the function of the active pump station, the switch back after stopping the operation.

Working water signal: water through the three-pass ball valve G, filter net, pump, fire hydrant I. (Where the A, B, C, D, E, F, H is closed).

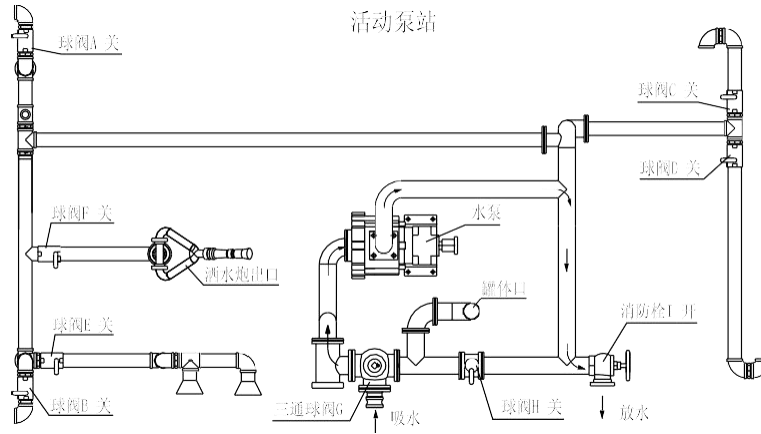


Fig. 3-4 Active pumping station

III.

Troubleshooting

Methods Table 3-1

Fault content	Fault cause	Troubleshooting method
The pump cannot suck water	The 1, water inlet pipe is not sealed	Check section by section to eliminate the air leakage area
	The 2, engine speed is too low to reach the required vacuum degree	Adjust the throttle to speed at around 1700 rpm
	The 3, water absorption height is greater than the allowable height	The height of water absorption shall be less than 5 m
	4, inlet lines is strictly blocked	Access road
	5, pump oil seal is damaged and leakage of pump shaft affects its vacuum	Replace seal
Water can not be put out of water	The water tank is too dirty, the filter is blocked and the tank freein winter.	Wash the water tank, clean the filter net to remove debris, with hot water or hot air is to melt the ice

IV. sprinkler maintenance

1, According to the use requirements of paint, before the new product, should be soaked with water for five days, then rinse the coating surface with water, then rinse the coating surface with water, and then fill water for two days, water can be put up drinking water. 2, often checks the sealing of the coupling, switches, suction hose and other parts of the waterway system, and the seals

shall be restored or replaced if leakage is found.3, often checks the fixing of water tank, pump rack and bracket, and all nuts shall be tightened to ensure the reliable fastening of the connection.

4, often checks the connection of the power collector and the water pump, which shall be reliably connected and operated normally. If the oil leakage of the force collector and water pump is found in use, the seal shall be replaced.

5, vehicle waterway system has no antifreeze device, so in cold areas, all the water in the water pump, water tank and waterway system should be cleared immediately after use below the temperature degrees Celsius. Pay attention that the water pump screw plug should be shut down tightly to ensure sealing, otherwise the water absorption of the pump will be affected.

The aint on the 6, tank must not be adhered to gasoline and kerosene because this causes accelerated paint damage. Check the paint quality on the tank on schedule. When the paint is damaged, fill the paint in time to prevent corrosion of the tank. See the truck service instructions for the use and maintenance of the 7, car chassis and engine parts.

The medium through which the 8, ball valve passes should not be too dirty, so as not to damage the seal ring and reduce the service life of the ring valve. Each ball valve should not operate in a semi-open state for a long time, otherwise it is easy to deform the seal ring. The 9, inlet pump filter screen shall be frequently removed to prevent the dregs from blocking the filter screen and affecting the flow rate.

10, Since the wooden rubber cushion between the tank and the car girder, the U bolts will become loose due to the deformation of the wood glue after the water tank load, so the U-shaped bolts must be tightened regularly after the heavy load, especially when the new car is used.

## V. After-sales service

1, When you need consultation or repair, please contact the after-sales service department of our factory and keep the purchase certificate properly to confirm that the car is within the warranty period.

The after-sales service of 2, chassis car is responsible for the chassis car manufacturer; the factory only implements "three guarantees" for the special modification part of the vehicle. In the process of use, no matter when or where any faults or problems occur, please contact with electricity, and we will give timely processing and give a clear reply within 24 hours of receiving the information.

The 3, new car should be maintained according to the regulations to enjoy the "three guarantees"

(1) Content and duration of the three guarantees:

a, vehicles can enjoy the "three guarantees" from the date of purchase (subject to the purchase invoice) and within 3000 kilometers (two conditions should be met at the same time);

The b, vehicle shall be fully inclusive within 10 days from the date of sale (subject to the date filled in by the after-sales service card), that is, if all parts are damaged due to manufacturing quality or cannot meet the use performance requirements of the whole machine, our factory shall implement "three guarantees";

c, "three guarantees" during the period is indeed caused by quality reasons, our company implements package repair;

During the d, "three guarantees" period of the assembly quality problems, the company, the supporting units and the maintenance service outlets repair (refers to the same failure) still can not reach the technical performance and cannot be used, and the assembly or parts shall be replaced.

(2) The following items do not belong to the "three guarantees": a, does not specified in this vehicle, Vehicles not maintained during the mandatory engagement period; b, vehicles cause d by abnormal use and spontaneous change of vehicle structure; c, traffic accident vehicle (including unlicensed driving and illegal vehicle); d, without the consent of the Company, Vehicle disassembly or adjustment; e, removes assembly or parts into parts without the consent of the Company, And can not argue the origin and unable to confirm the responsibility and the original

Vehicles due to the analysis;

f, self-handled accident vehicles without the approval or identification of the Company; g, faulty vehicles due to improper adjustment or no inspection adjustment; h, low-value consumables, vulnerable parts (e. g., electrical appliances, glass, rubber, plastic products, etc.); various marks and bearings.4, does not belong to vehicles within the scope of "three guarantees". Our company is responsible to users to provide convenient maintenance services, but

A fee should be properly charged.

5, For your rationalization suggestions of this product or other products,

please put forward to my future service department, for the factory timely adoption, all the factory staff to express the most sincere thanks to you!

1. One book of the cargo vehicle instruction manual.
- One 2, Car Chassis Certificate.
- One 3, sprinkler manual.
- 4, truck warranty
- One 5, Oil Tank Test Report.
- 6, Truck ToTool.